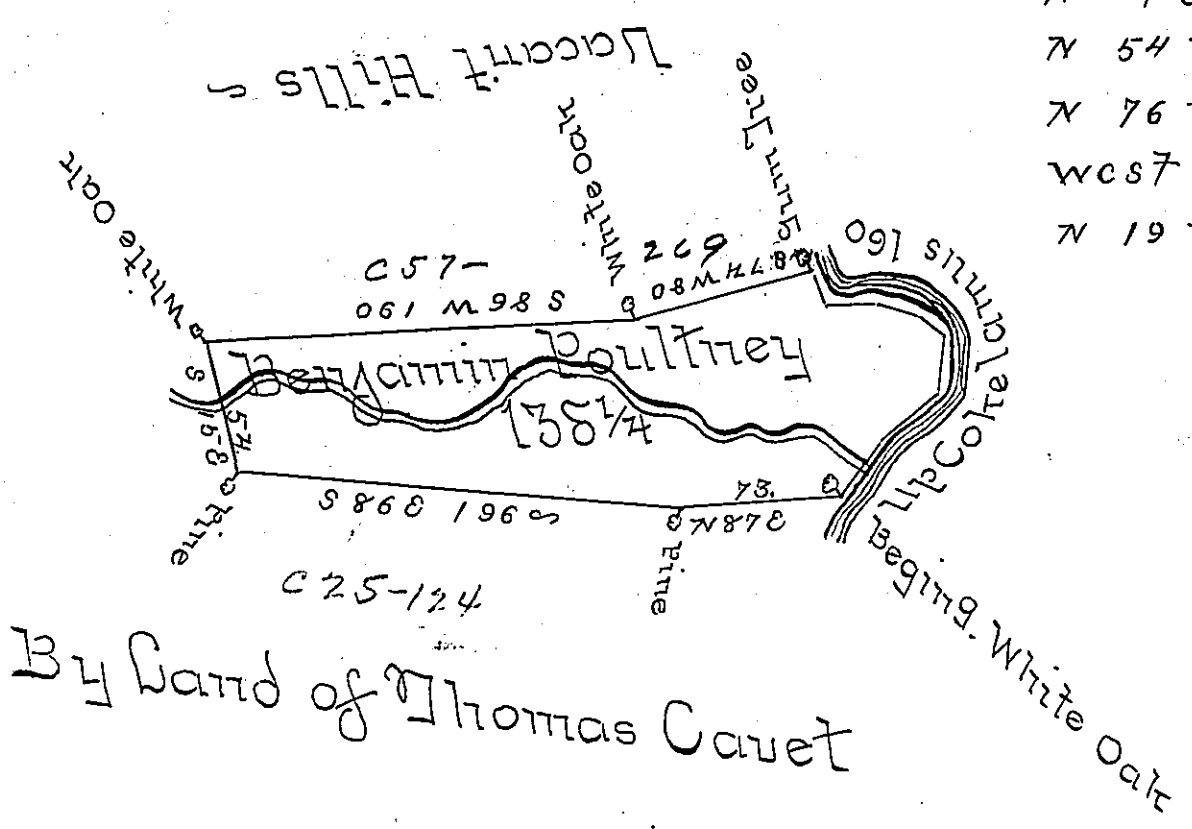


Courses & Distance
up Cokelamus Creek

N	36	E	30
N	49	E	32
N	4	E	26
N	54	W	14
N	76	W	20
W	87		24
N	19	W	14
			160



By Land of Thomas Carvet

The Draught of a Tract of Land called Lycant's Choice situate on the West side of Cokelamus Creek in Germania Township in Cumberland County containing one Hundred thirty eight Acres forty three Perches and an Allow^e of six Acres & Cent. for Roads Surveyed for Benjamin Baultney the 23^d Day of April A.D. 1767 in Pursuance of an Order of Survey dated at Philad^a the 7th day of October Anno Dom. 1766 and numbered 1733

Wm Maclay D.S.

To John Lukens Esq: Secy. of Pennsylvania

IN TESTIMONY that the above is a copy of the original remaining on file in the Department of Internal Affairs of Pennsylvania, made conformably to an Act of Assembly approved the 16th day of February, 1833, I have hereunto set my Hand, and caused the Seal of said Department to be affixed at Harrisburg, this 5th day of November 1899.

James W. Pitts
Secretary of Internal Affairs.